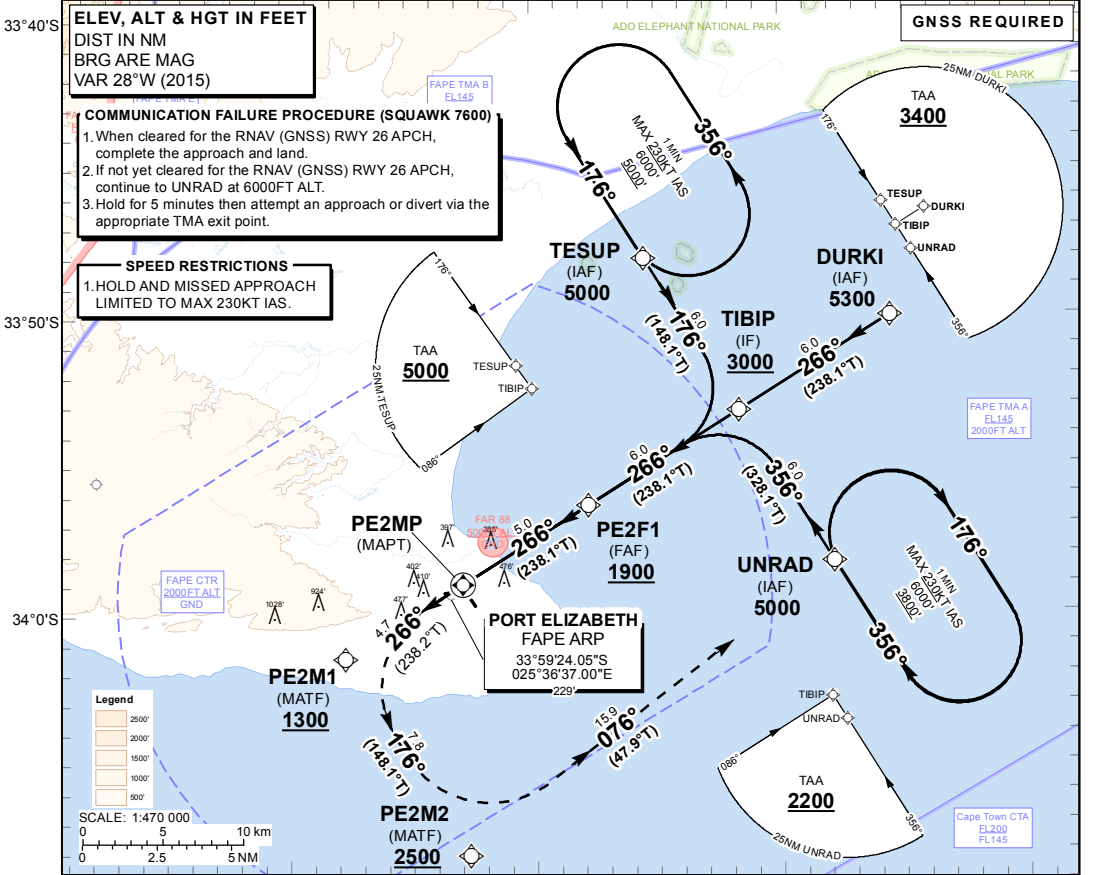


**INSTRUMENT
APPROACH
CHART - ICAO**

AERODROME ELEV 229'
HEIGHTS RELATED TO
THR RWY 26 - ELEV 189'

RADAR APP: 120.40
TWR: 118.10
CLEARANCE: 122.10
ATIS: 126.80

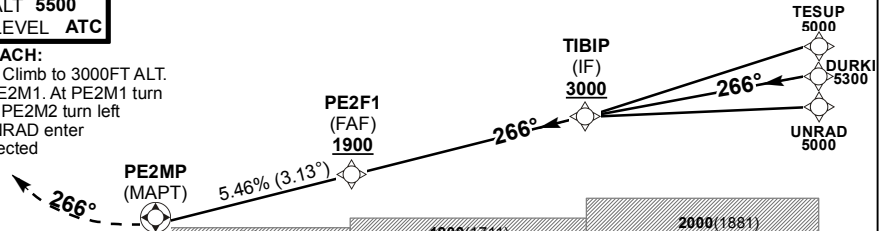
**PORT ELIZABETH
RNAV (GNSS) RWY 26
CAT A - D**



	25°30'E	25°40'E	25°50'E	26°0'E								
DIST (NM) to THR 26	11	10	9	8	7	6	5	4	3	2	1	0
DIST (NM) to Next WPT	TIBIP	5	4	3	2	1	PE2F1	4	3	2	1	PE2MP
ADVISORY ALT (HGT)	3000(2811)	2820(2631)	2640(2451)	2450(2261)	2270(2081)	2090(1901)	1900(1711)	1570(1381)	1240(1051)	910(721)	580(391)	240(51)

TRANSITION ALT 5500
TRANSITION LEVEL ATC

MISSED APPROACH:
MAX 230KT IAS. Climb to 3000FT ALT. Route direct to PE2M1. At PE2M1 turn left to PE2M2. At PE2M2 turn left to UNRAD. At UNRAD enter the hold or as directed by ATC.



THR ELEV 189
NM to/from THR RWY 26

	0	1	2	3	4	5	6	7	8	9	10	11	12	13	14	15	16	17	

Straight-in Approach	MIN TEMP: 0°C	A	B	C	D	GS	KT	80	100	120	140	160
	LNAV OCA(H)	760 (571)	760 (571)	760 (571)	760 (571)	FAF to MAPT	M:S	3:45	3:00	2:30	2:09	1:53
	VNAV OCA(H)	755 (566)	755 (566)	755 (566)	755 (566)	Rate of descent	FPM	443	554	664	775	886
	RVR	1000m	1200m	1200m	1600m	2.5% Climb Gradient	FPM	203	253	304	354	405
ALS OUT		1500m	1500m	2000m	2000m							
Circling	Circle to land at the discretion of the pilot in command											

CHANGE: Revised Waypoint Names and Positions

NOTE:
1. Turns prior PE2MP prohibited.
2. RoD 5.46% (3.13°).